

Insulator Window Series

exceptional quality and traditional value



NOT ALL WINDOWS ARE CREATED EQUAL

The Insulator Series by Joyce Windows is today's choice for exceptional quality at the right price. Whether you need a double-hung, a two- or three-section slider, or a picture window – we can accommodate your request and guarantee it for a lifetime.

YOUR HOME IS YOUR GREATEST INVESTMENT

Protect it and maintain your comfort with highly energy efficient Insulator solid vinyl replacement windows. An excellent investment with a contoured stylish appeal is made to suit your needs and special decor.

MADE IN AMERICA: CERTIFIED AND GUARANTEED

- Energy Star® Qualified
- Engineered Structurally Sound
- Lifetime, Non-Prorated, Transferable Warranty
- Relocation and Natural Disaster Protection
- Quality Custom Manufacturing Since 1955
- Complete line including casements, awnings, bays, bows, basements and more



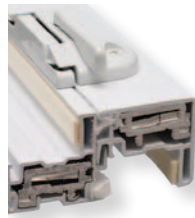
Recessed tilt latches

- Better appearance
- Easy to operate (ergonomic)



Dual vent locks

- Allows window to remain partially open
- Prevents further opening of window from the outside



Metal reinforced lock and keeper rail

- Provides strength and rigidity





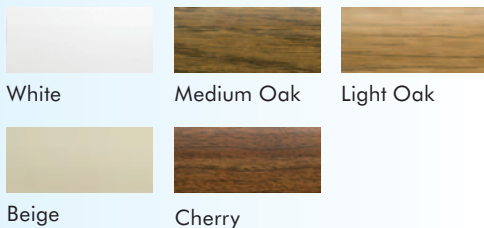
FEATURES

BENEFITS

1. Multichambered fusion-welded main & sash frame	Increases strength and energy efficiency while creating a weather-tight corner
2. Stepped-down jamb	Improves structural strength
3. Truly sloped sill	Keeps water outside, no need for weep holes
4. Beveled exterior with integral drip cap	Aesthetically pleasing; keeps glass cleaner
5. Recessed accessory groove	Attractive appearance of mulled windows
6. Double-barrier finseal weather stripping	Tight seal – prevents air and water infiltration
7. 7/8" insulated glass	Superior thermal performance; sound deadening
8. Self-adjusting stainless steel clock spring balance system (constant force)	Strongest in industry; allows homeowner to effortlessly raise and lower sash
9. Bulb seal	Creates an ultra-tight seal; prevents cold air infiltration
10. Low Emissivity (Low E) glass	Keeps the heat out in summer and the heat in during winter; protects against UV damage
Overlapping double wall sill dam leg	Eliminates potential air and water infiltration

CUSTOMIZE, DECORATE AND COLORIZE

COLORS*



*Woodgrain available as interior only. Colors are not an exact match. Refer to samples for accurate color match.

PRIZM EXTERIOR ACRYLIC COATING

- 10 different colors standard
- Custom color matching available by request
- Reflective pigments minimize heat absorption
- No chipping or peeling
- AAMA Certified
- Lifetime warranty

GRIDS

- Available flat, contoured, brass pencil, colonial, diamond, prairie, and double prairie
- Placed between the panes of glass for a smooth elegant appearance

Your Local Representative

YOUR APPOINTMENT IS: DAY _____ DATE _____ TIME _____